



Four  
Legs  
Affair

# Product Catalog 2024

Rent modern event  
furnitures to  
complement your  
event's theme.



# Clients



# Chairs



**Hulett Chair**

500mm(W) x 520mm(D) x 820mm(H)

Plastic with Chrome Steel Leg Construction

1-2 Days: \$18

3-4 Days: \$20

5-6 Days: \$25



**Eiffel Chair**

(W)520mm x (D)400mm x (H)950mm

Polypropylene (PP) Construction

1-2 Days: \$15

3-4 Days: \$17

5-6 Days: \$19



**Oval Chair**

(W)410mm x (D)400mm x (H)940mm

Polypropylene (PP) Construction

1-2 Days: \$15

3-4 Days: \$17

5-6 Days: \$19



**Como Chair**

(W)450mm x (D)500mm x (H)780mm

Powder Coated Steel with Synthetic Leather

1-2 Days: \$10

3-4 Days: \$11

5-6 Days: \$12



**Tiffany Chair with Black Spandex**

(W)410mm x (D)400mm x (H)940mm

Polypropylene (PP) Construction

1-2 Days: \$10

3-4 Days: \$11

5-6 Days: \$12



**Tiffany Chair (White)**

(W)410mm x (D)400mm x (H)940mm

Polypropylene (PP) Construction

1-2 Days: \$6

3-4 Days: \$7

5-6 Days: \$8

# Chairs



Tiffany Chair (Gold)

(W)410mm x (D)400mm x (H)940mm

Polypropylene (PP) Construction

1-2 Days: \$6  
3-4 Days: \$7  
5-6 Days: \$8



Tiffany Chair (Black)

(W)410mm x (D)400mm x (H)940mm

Polypropylene (PP) Construction

1-2 Days: \$6  
3-4 Days: \$7  
5-6 Days: \$8



Foldable Chair (White)

(W)430mm x (D)470mm x (H)780mm

ABS Plastic with Iron Leg Construction

1-2 Days: \$5.5  
3-4 Days: \$6  
5-6 Days: \$6.5



Foldable Chair (Black)

(W)430mm x (D)470mm x (H)780mm

ABS Plastic with Iron Leg Construction

1-2 Days: \$5.5  
3-4 Days: \$6  
5-6 Days: \$6.5



Compact Training Chair

(W)470mm x (D)490mm x (H)870mm

Seat Height - 430mm

Mesh with ABS Plastic Frame

1-2 Days: \$20  
3-4 Days: \$25  
5-6 Days: \$29



Compact Tablet Chair

(W)470mm x (D)490mm x (H)870mm

Table - (W)410mm x (D)270mm

Mesh with ABS Plastic Frame

1-2 Days: \$30  
3-4 Days: \$34  
5-6 Days: \$38

# Bar Stools



Chaise Bar Stool (White)

430mm(W) x 430(D) x 840mm(H)

Maximum Seat Height is 780mm(H)

Polypropylene (PP) with Iron Leg Construction

1-2 Days: \$22

3-4 Days: \$25

5-6 Days: \$28



Chaise Bar Stool (Black)

430mm(W) x 430(D) x 840mm(H)

Maximum Seat Height is 780mm(H)

Polypropylene (PP) with Iron Leg Construction

1-2 Days: \$22

3-4 Days: \$25

5-6 Days: \$28



Cone Bar Stool (White)

400mm(W) x 440mm(D) x 800mm(H)

Maximum Seat Height is 780mm(H)

ABS Plastic with Chrome Base Construction

1-2 Days: \$15

3-4 Days: \$17

5-6 Days: \$19



Cone Bar Stool (Black)

400mm(W) x 440mm(D) x 800mm(H)

Maximum Seat Height is 780mm(H)

ABS Plastic with Chrome Base Construction

1-2 Days: \$15

3-4 Days: \$17

5-6 Days: \$19



Lem Bar Stool (White)

(W)385mm x (D)455mm

Height : 660 to 880mm

Material: Synthetic Leather & Chrome Steel

Colour: White

1-2 Days: \$15

3-4 Days: \$17

5-6 Days: \$19



Lem Bar Stool (Black)

(W)385mm x (D)455mm

Height : 660 to 880mm

Material: Synthetic Leather & Chrome Steel

Colour: Black

1-2 Days: \$15

3-4 Days: \$17

5-6 Days: \$19

# Bar Stools



Alsen Bar Stool

(W)400mm x (D)400mm x (H)750mm

Wooden Frame

1-2 Days: \$15

3-4 Days: \$17

5-6 Days: \$19



Apiary Bar Chair (Black)

(W)540mm x (D)510mm x (H)1000mm

PVC Mesh with Iron Legs

1-2 Days: \$35

3-4 Days: \$38

5-6 Days: \$42



Apiary Bar Chair (Brown)

(W)540mm x (D)510mm x (H)1000mm

PVC Mesh with Iron Legs

1-2 Days: \$35

3-4 Days: \$38

5-6 Days: \$42



Bel Cushion Bar Stool (Black)

(W)410mm x (D)410mm x (H)960mm

Velvet with Iron Legs

1-2 Days: \$20

3-4 Days: \$25

5-6 Days: \$29



Bel Cushion Bar Stool (Emerald)

(W)410mm x (D)410mm x (H)960mm

Velvet with Iron Legs

1-2 Days: \$20

3-4 Days: \$25

5-6 Days: \$29



Bel Cushion Bar Stool (White)

(W)410mm x (D)410mm x (H)960mm

Velvet with Iron Legs

1-2 Days: \$20

3-4 Days: \$25

5-6 Days: \$29

# Bar Stools



**Birka Bar Stool (Black)**

(W)440mm x (D)510mm x (H)920mm

Polypropylene (PP) Construction

1-2 Days: \$20

3-4 Days: \$25

5-6 Days: \$29



**Birka Bar Stool (White)**

(W)440mm x (D)510mm x (H)920mm

Polypropylene (PP) Construction

1-2 Days: \$20

3-4 Days: \$25

5-6 Days: \$29



**Cregg Bar Stool**

(W)300mm x (D)400mm x (H)700mm

Wood with Metal Legs

1-2 Days: \$15

3-4 Days: \$17

5-6 Days: \$19



**Director Bar Chair**

(W)535mm x (D)400mm x (H)1150mm

Wooden Construction

1-2 Days: \$25

3-4 Days: \$28

5-6 Days: \$32



**Flon Bar Stool**

(W)410mm x (D)470mm x (H)1030mm

Polypropylene (PP) Construction

1-2 Days: \$30

3-4 Days: \$35

5-6 Days: \$38



**Foldable High Chair (Black)**

(W)500mm x (D)440mm x (H)1030mm

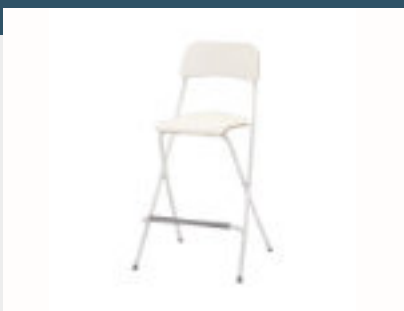
MDF Wood Construction

1-2 Days: \$20

3-4 Days: \$25

5-6 Days: \$29

# Bar Stools



Foldable High Chair (White)

(W)500mm x (D)440mm x (H)1030mm  
MDF Wood Construction

1-2 Days: \$20  
3-4 Days: \$25  
5-6 Days: \$29



Helena Bar Chair (Black)

(W)440mm x (D)470mm x (H)1010mm  
PU Leather and Polypropylene (PP)

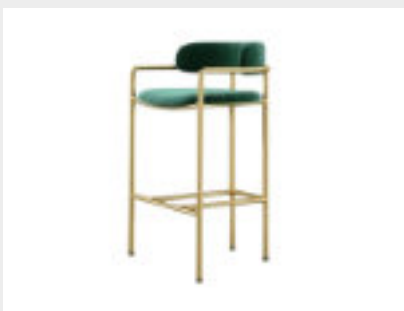
1-2 Days: \$25  
3-4 Days: \$28  
5-6 Days: \$32



Helena Bar Chair (White)

(W)440mm x (D)470mm x (H)1010mm  
PU Leather and Polypropylene (PP)

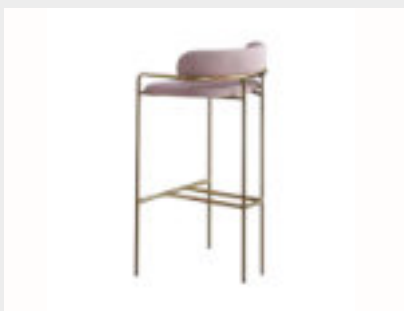
1-2 Days: \$25  
3-4 Days: \$28  
5-6 Days: \$32



Jen Bar Chair (Emerald)

(W)520mm x (D)440mm x (H)940mm  
Velvet with Iron Legs

1-2 Days: \$35  
3-4 Days: \$38  
5-6 Days: \$42



Jen Bar Chair (Pink)

(W)520mm x (D)440mm x (H)940mm  
Velvet with Iron Legs

1-2 Days: \$35  
3-4 Days: \$38  
5-6 Days: \$42



Lexa Gold Bar Stool

(W)440mm x (D)440mm x (H)950mm  
Iron Construction with Cotton Cushion

1-2 Days: \$22  
3-4 Days: \$25  
5-6 Days: \$28



# Bar Stools



Lofta Bar Chair

(W)520mm x (D)550mm x (H)1190mm

PE Weaven Construction

1-2 Days: \$35  
3-4 Days: \$38  
5-6 Days: \$42



Lyon Cushion Bar Stool (Black)

(W)390mm x (D)390mm x (H)1050mm

Velvet with Iron Legs

1-2 Days: \$20  
3-4 Days: \$25  
5-6 Days: \$29

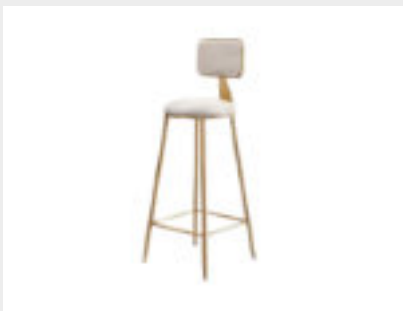


Lyon Cushion Bar Stool (Emerald)

(W)390mm x (D)390mm x (H)1050mm

Velvet with Iron Legs

1-2 Days: \$20  
3-4 Days: \$25  
5-6 Days: \$29



Lyon Cushion Bar Stool (White)

(W)390mm x (D)390mm x (H)1050mm

Velvet with Iron Legs

1-2 Days: \$20  
3-4 Days: \$25  
5-6 Days: \$29



Modern Ratten Bar Stool Replica

(W)400mm x (D)350mm x (H)750mm

Polypropylene (PP) Construction

1-2 Days: \$25  
3-4 Days: \$28  
5-6 Days: \$32



Modern Ratten Cushion Bar Stool Replica

(W)470mm x (D)570mm x (H)1070mm

Velvet with Iron Legs

1-2 Days: \$35  
3-4 Days: \$38  
5-6 Days: \$42

# Bar Stools



Ona Bar Stool (Black)

(W)390mm x (D)390mm x (H)920mm

Velvet with Iron Legs

1-2 Days: \$25  
3-4 Days: \$28  
5-6 Days: \$32



Ona Bar Stool (White)

(W)390mm x (D)390mm x (H)920mm

Velvet with Iron Legs

1-2 Days: \$25  
3-4 Days: \$28  
5-6 Days: \$32

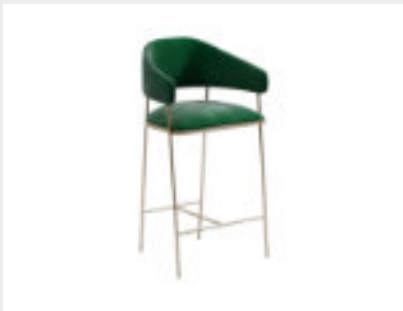


Panelia Cushion Bar Chair (Beige)

(W)570mm x (D)510mm x (H)1030mm

Velvet with Iron Legs

1-2 Days: \$35  
3-4 Days: \$38  
5-6 Days: \$42



Panelia Cushion Bar Chair (Emerald)

(W)570mm x (D)510mm x (H)1030mm

Velvet with Iron Legs

1-2 Days: \$35  
3-4 Days: \$38  
5-6 Days: \$42



Solsa Bar Chair (Black)

(W)480mm x (D)400mm x (H)930mm

Seat Height - 580mm to 780mm (Maximum)

PU Leather with Metal Base

1-2 Days: \$30  
3-4 Days: \$34  
5-6 Days: \$38



Solsa Bar Chair (White)

(W)480mm x (D)400mm x (H)930mm

Seat Height - 580mm to 780mm (Maximum)

PU Leather with Metal Base

1-2 Days: \$30  
3-4 Days: \$34  
5-6 Days: \$38

# Bar Stools



Spoon Bar Stool (Black)

(W)370mm x (D)330mm x (H)1040mm

Seat Height - 600mm to 800mm (Maximum)

PU Leather with Metal Base

1-2 Days: \$22

3-4 Days: \$25

5-6 Days: \$28



Spoon Bar Stool (White)

(W)370mm x (D)330mm x (H)1040mm

Seat Height - 600mm to 800mm (Maximum)

PU Leather with Metal Base

1-2 Days: \$22

3-4 Days: \$25

5-6 Days: \$28



Sunn Bar Stool (Black)

(W)385mm x (D)455mm x (H)850mm

PU Leather with Metal Base

1-2 Days: \$25

3-4 Days: \$28

5-6 Days: \$32



Sunn Bar Stool (White)

(W)385mm x (D)455mm x (H)850mm

PU Leather with Metal Base

1-2 Days: \$25

3-4 Days: \$28

5-6 Days: \$32



Tolix Bar Stool

(W)415mm x (D)415mm x (H)760mm

Iron Construction

1-2 Days: \$20

3-4 Days: \$25

5-6 Days: \$29



Tolix Br Bar Stool

(W)415mm x (D)415mm x (H)860mm

Iron Construction

1-2 Days: \$25

3-4 Days: \$28

5-6 Days: \$32

# Bar Stools



Vigo Leather Bar Stool

(W)440mm x (D)470mm x (H)970mm

Synthetic Leather Leather with Iron Legs

1-2 Days: \$35

3-4 Days: \$38

5-6 Days: \$42



Willows Bar Stool

(W)300mm x (D)400mm x (H)700mm

MDF with Iron Legs

1-2 Days: \$15

3-4 Days: \$17

5-6 Days: \$19



# Sofa



Martin Sofa (Black)

(W)760mm x (D)650mm x (H)700mm

Synthetic Leather

1-2 Days: \$70

3-4 Days: \$80

5-6 Days: \$90



Martin Sofa (White)

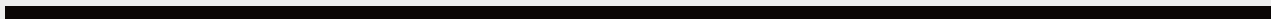
(W)760mm x (D)650mm x (H)700mm

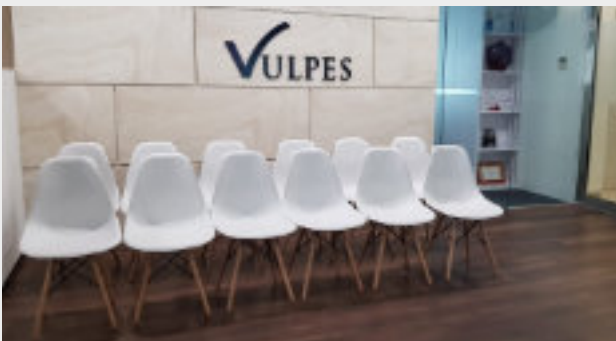
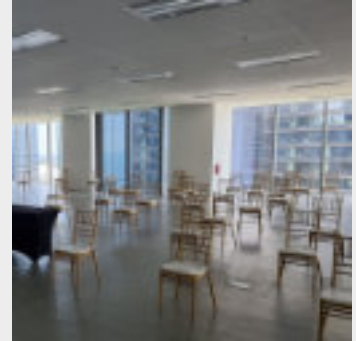
Synthetic Leather

1-2 Days: \$70

3-4 Days: \$80

5-6 Days: \$90





# Tables



**Berlin Long Table**

(W)1800mm x (D)650mm x (H)750mm

Stainless Steel Frame with Acrylic Top

1-2 Days: \$80  
3-4 Days: \$90  
5-6 Days: \$110



**5ft Round Table**

1520mm(W) x 1520mm(D) x 740mm(H)

HDPE with Metal Leg

1-2 Days: \$30  
3-4 Days: \$34  
5-6 Days: \$40



**5ft Round Table with Cloth (White)**

1520mm(W) x 1520mm(D) x 740mm(H)

Polyester Cloth

1-2 Days: \$46  
3-4 Days: \$50  
5-6 Days: \$60



**5ft Round Table with Cloth (Black)**

1520mm(W) x 1520mm(D) x 740mm(H)

Polyester Cloth

1-2 Days: \$46  
3-4 Days: \$50  
5-6 Days: \$60



**Tulip Table**

(W)700mm x (D)700mm x (H)750mm

MDF Top with Iron Leg

1-2 Days: \$45  
3-4 Days: \$50  
5-6 Days: \$56



**6ft Foldable Table**

760mm(W) x 1830mm(D) x 740mm(H)

HDPE with Metal Leg Construction

1-2 Days: \$30  
3-4 Days: \$34  
5-6 Days: \$40

# Tables



6ft Foldable Spandex Table (White)

760mm(W) x 1830mm(D) x 740mm(H)

Spandex Cover

1-2 Days: \$42  
3-4 Days: \$45  
5-6 Days: \$54



6ft Foldable Spandex Table (Black)

760mm(W) x 1830mm(D) x 740mm(H)

Spandex Cover

1-2 Days: \$42  
3-4 Days: \$45  
5-6 Days: \$54



Cage Table

(W)700mm x (D)700mm x (H)750mm

MDF Gloss Finishing Top with Iron Leg

1-2 Days: \$36  
3-4 Days: \$40  
5-6 Days: \$48



Discussion Table (White)

700mm(W) x 700mm(D) x 750mm(H)

MDF Top with Chrome Leg

1-2 Days: \$34  
3-4 Days: \$38  
5-6 Days: \$45



Discussion Table (Black)

700mm(W) x 700mm(D) x 750mm(H)

MDF Top with Chrome Leg

1-2 Days: \$34  
3-4 Days: \$38  
5-6 Days: \$45



4ft Table

610mm(W) x 1220mm(D) x 740mm(H)

HDPE with White Metal Leg

1-2 Days: \$20  
3-4 Days: \$22  
5-6 Days: \$24



# Tables



4ft Spandex Table (White)

610mm(W) x 1220mm(D) x 740mm(H)

Spandex Cover

1-2 Days: \$28  
3-4 Days: \$30  
5-6 Days: \$40



4ft Spandex Table (Black)

610mm(W) x 1220mm(D) x 740mm(H)

Spandex Cover

1-2 Days: \$28  
3-4 Days: \$30  
5-6 Days: \$40



3ft Square Table

920mm(W) x 920mm(D) x 740mm(H)

HDPE with White Metal Leg

1-2 Days: \$20  
3-4 Days: \$22  
5-6 Days: \$24



3ft Square Table with Spandex (White)

920mm(W) x 920mm(D) x 740mm(H)

Spandex Cover

1-2 Days: \$28  
3-4 Days: \$30  
5-6 Days: \$40



4ft Spandex Table (Black)

920mm(W) x 920mm(D) x 740mm(H)

Spandex Cover

1-2 Days: \$28  
3-4 Days: \$30  
5-6 Days: \$40

# Bar Tables



High Cage Bar Table (White)

(W)700mm x (D)700mm x (H)1020mm

MDF Top with Iron Leg Construction

1-2 Days: \$44  
3-4 Days: \$48  
5-6 Days: \$58



High Cage Bar Table (Black)

(W)700mm x (D)700mm x (H)1020mm

MDF Top with Iron Leg Construction

1-2 Days: \$44  
3-4 Days: \$48  
5-6 Days: \$58



Bloom Bar Spandex Table (White)

(W)600mm x (D)600mm x (H)1100mm

Spandex Cover

1-2 Days: \$36  
3-4 Days: \$40  
5-6 Days: \$48



Bloom Bar Spandex Table (Black)

(W)600mm x (D)600mm x (H)1100mm

Spandex Cover

1-2 Days: \$36  
3-4 Days: \$40  
5-6 Days: \$48



Bloom Bar Table (White)

(W)600mm x (D)600mm x (H)1100mm

MDF Top with Chrome Leg Construction

1-2 Days: \$34  
3-4 Days: \$38  
5-6 Days: \$45



Bloom Bar Table (Black)

(W)600mm x (D)600mm x (H)1100mm

MDF Top with Chrome Leg Construction

1-2 Days: \$34  
3-4 Days: \$38  
5-6 Days: \$45

# Bar Tables



Alsen Bar Table

(W)600mm x (D)600mm x (H)1020mm

MDF Top with Wooden Legs

1-2 Days: \$34

3-4 Days: \$38

5-6 Days: \$45



Bloom Bar Table Marble Top (Black)

(W)550mm x (D)550mm x (H)1050mm

MDF Top with Iron Legs

1-2 Days: \$44

3-4 Days: \$48

5-6 Days: \$58



Bloom Bar Table Marble Top (Gold)

(W)550mm x (D)550mm x (H)1050mm

MDF Top with Iron Legs

1-2 Days: \$44

3-4 Days: \$48

5-6 Days: \$58



Clark Bar Table

(W)600mm x (D)600mm x (H)1050mm

MDF Top with Iron Legs

1-2 Days: \$40

3-4 Days: \$44

5-6 Days: \$48



Classic Eden Bar Table

(W)600mm x (D)600mm x (H)1030mm

MDF Top with Iron Legs

1-2 Days: \$36

3-4 Days: \$40

5-6 Days: \$48



Classic Wood Top Bar Table

(W)600mm x (D)600mm x (H)1050mm

MDF Top with Iron Legs

1-2 Days: \$36

3-4 Days: \$40

5-6 Days: \$48

# Bar Tables



Hackas Bar Table

(W)600mm x (D)600mm x (H)1050mm

MDF Top with Iron Legs

1-2 Days: \$44  
3-4 Days: \$48  
5-6 Days: \$58



Stranda Square Bar Table

(W)600mm x (D)600mm x (H)1050mm

MDF Top with Iron Legs

1-2 Days: \$40  
3-4 Days: \$44  
5-6 Days: \$48

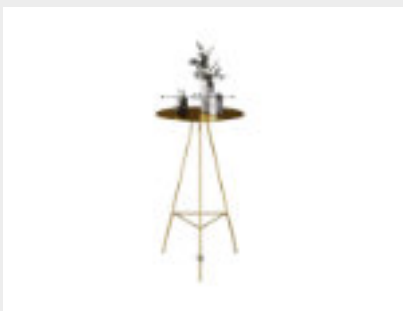


Tripod Bar Table (Black)

(W)600mm x (D)600mm x (H)1050mm

Metal Construction

1-2 Days: \$30  
3-4 Days: \$34  
5-6 Days: \$38

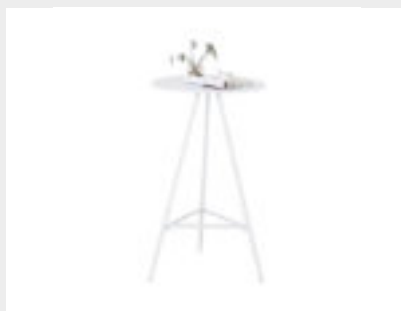


Tripod Bar Table (Gold)

(W)600mm x (D)600mm x (H)1050mm

Metal Construction

1-2 Days: \$30  
3-4 Days: \$34  
5-6 Days: \$38



Tripod Bar Table (White)

(W)600mm x (D)600mm x (H)1050mm

Metal Construction

1-2 Days: \$30  
3-4 Days: \$34  
5-6 Days: \$38

# Coffee Tables



## Amaro Coffee Table

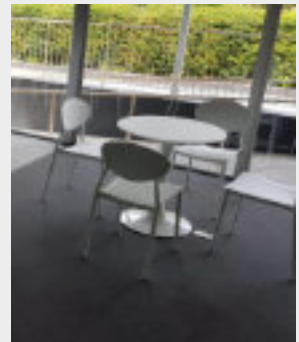
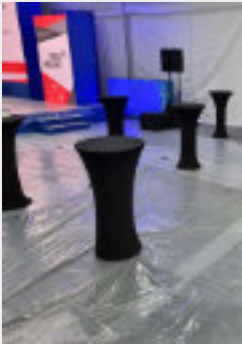
(W)600m x (D)600mm x (H)450mm

Black Tempered Glass Finish Top & Chrome Steel  
Frame

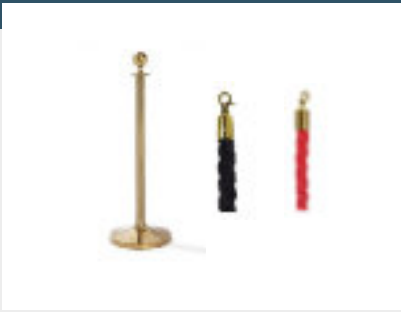
1-2 Days: \$28

3-4 Days: \$32

5-6 Days: \$36



# Queue Pole



### Rope Ball Top Queue Pole

320mm(W) x 360mm(D) x 1000mm(H)

Rope Length is 1500mm

Stainless Steel with Twisted Rope

Red or black rope

1-2 Days: \$16

3-4 Days: \$18

5-6 Days: \$22



### Queue Pole Cone Base

320mm(W) x 360mm(D) x 920mm(H)

Maximum Belt Length is 1900mm

Steel with Black Powder Coating

Black or red belt

1-2 Days: \$14

3-4 Days: \$16

5-6 Days: \$20



### Queue Pole Stackable Base

320mm(W) x 360mm(D) x 920mm(H)

Maximum Belt Length is 1900mm

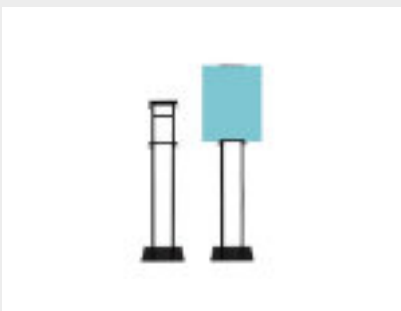
Steel with Black Powder Coating

Black or Red Belt

1-2 Days: \$14

3-4 Days: \$16

5-6 Days: \$20



### Poster Stand

2000mm(H) (Fits A4 to A0 Size)

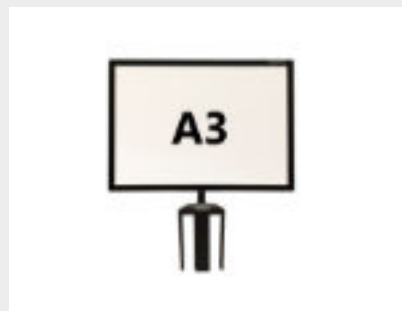
Iron

Available in black or white

1-2 Days: \$14

3-4 Days: \$16

5-6 Days: \$20



### Queue Pole Sign (A3)

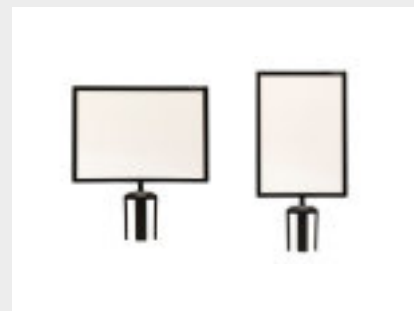
430mm(W) x 300mm(H) (landscape)

Steel with Black Powder Coating

1-2 Days: \$6

3-4 Days: \$8

5-6 Days: \$10



### Queue Pole Sign (A4)

220mm(W) x 310mm(H) (Portrait)

310mm(W) x 220mm(H) (Landscape)

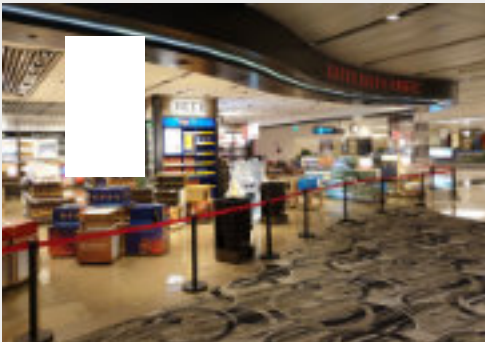
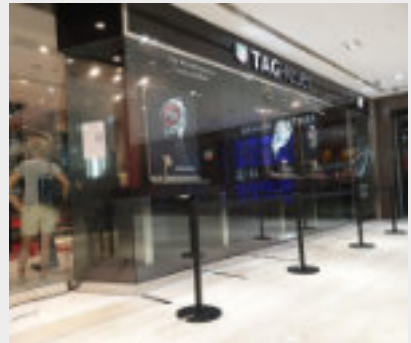
Steel with Black Powder Coating

1-2 Days: \$6

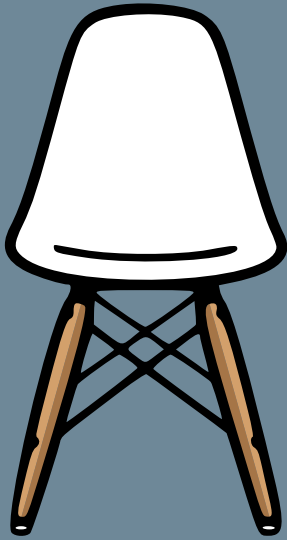
3-4 Days: \$8

5-6 Days: \$10









## Four Legs Affair

Four Legs Affair Pte. Ltd.  
50 Serangoon North Avenue 4  
First Centre  
#03-16  
Singapore 555856

<https://www.fourlegsaffair.sg>  
sales@fourlegsaffair.sg  
+65 8830 4916

## Delivery Rates

During office hours (Mon to Sat) 9am to 6pm

From \$60 onwards

After office hours / Sunday & Public Holidays

From \$120 onwards

Delivery charge stated above is a guided price and shall be subjected to changes based on the following:

- > Large-scale events/conferences/exhibitions
- > Restrictions imposed by venue
- > Accessibility of the venue
- > Needs special requirements
- > Additional charges for manpower & transportation may be applicable for large-scale events/conferences/exhibitions.

Any last minute changes made 24 hours before event date shall be subjected to availability.

Self collect and return at our warehouse is available.

## Terms & Conditions

### Mode of Payment

- > Full payment via cash/cheque upon delivery OR
- > Full payment via bank transfer or PayNow latest 7 days before setup date

### Handling & Usage

- > The customer is solely responsible for the furnitures used for its intended purpose throughout the usage period.
- > Any possible defects of the furniture shall be checked & acknowledge by Four Legs Affair Pte Ltd and the customer before commencement of the hire.
- > Any delay/cost arising from damages and loss of furniture hired caused by the customer's negligence shall be borne by the customer. All furniture should also be returned in clean and working condition after usage.
- > A 300% penalty of the stated rental rates will be imposed for loss and damaged items due to the customer's negligence.

### Cancellation

- > In the event of a cancellation due to unforeseen circumstances, a minimum of 48 hours of lead time must be provided in advance or the customer is to bear a 30% penalty charge for the overall charges.
- > There will not be no cancellation for items already delivered on site, big-scale orders & specially requested furnishing.