



Four
Legs
Affair

Product Catalog 2023

Rent modern event
furnitures to
complement your
event's theme.



Clients



Chairs



Hulett Chair

500mm(W) x 520mm(D) x 820mm(H)

Plastic with Chrome Steel Leg Construction

1-2 Days: \$18

3-4 Days: \$20

5-6 Days: \$25



Eiffel Chair

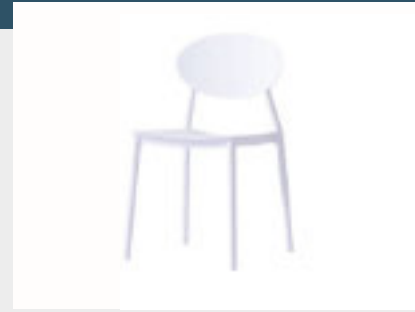
(W)520mm x (D)400mm x (H)950mm

Polypropylene (PP) Construction

1-2 Days: \$15

3-4 Days: \$17

5-6 Days: \$19



Oval Chair

(W)410mm x (D)400mm x (H)940mm

Polypropylene (PP) Construction

1-2 Days: \$15

3-4 Days: \$17

5-6 Days: \$19



Vines Chair

(W)545mm x (D)550mm x (H)830mm

Polypropylene (PP) Construction

1-2 Days: \$15

3-4 Days: \$17

5-6 Days: \$19



Como Chair

(W)450mm x (D)500mm x (H)780mm

Powder Coated Steel with Synthetic Leather

1-2 Days: \$10

3-4 Days: \$11

5-6 Days: \$12



Tiffany Chair with Black Spandex

(W)410mm x (D)400mm x (H)940mm

Polypropylene (PP) Construction

1-2 Days: \$10

3-4 Days: \$11

5-6 Days: \$12

Chairs



Tiffany Chair (White)

(W)410mm x (D)400mm x (H)940mm

Polypropylene (PP) Construction

1-2 Days: \$6
3-4 Days: \$7
5-6 Days: \$8



Tiffany Chair (Gold)

(W)410mm x (D)400mm x (H)940mm

Polypropylene (PP) Construction

1-2 Days: \$6
3-4 Days: \$7
5-6 Days: \$8



Tiffany Chair (Black)

(W)410mm x (D)400mm x (H)940mm

Polypropylene (PP) Construction

1-2 Days: \$6
3-4 Days: \$7
5-6 Days: \$8



Foldable Chair (White)

(W)430mm x (D)470mm x (H)780mm

ABS Plastic with Iron Leg Construction

1-2 Days: \$5.5
3-4 Days: \$6
5-6 Days: \$6.5



Foldable Chair (Black)

(W)430mm x (D)470mm x (H)780mm

ABS Plastic with Iron Leg Construction

1-2 Days: \$5.5
3-4 Days: \$6
5-6 Days: \$6.5



PVC Chair (White)

(W)410mm x (D)400mm x (H)940mm

PVC Construction

1-2 Days: \$2
3-4 Days: \$3
5-6 Days: \$4

Bar Stools



Chaise Bar Stool (White)

430mm(W) x 430(D) x 840mm(H)

Maximum Seat Height is 780mm(H)

Polypropylene (PP) with Iron Leg Construction

1-2 Days: \$22

3-4 Days: \$25

5-6 Days: \$28



Chaise Bar Stool (Black)

430mm(W) x 430(D) x 840mm(H)

Maximum Seat Height is 780mm(H)

Polypropylene (PP) with Iron Leg Construction

1-2 Days: \$22

3-4 Days: \$25

5-6 Days: \$28



Cone Bar Stool (White)

400mm(W) x 440mm(D) x 800mm(H)

Maximum Seat Height is 780mm(H)

ABS Plastic with Chrome Base Construction

1-2 Days: \$15

3-4 Days: \$17

5-6 Days: \$19



Cone Bar Stool (Black)

400mm(W) x 440mm(D) x 800mm(H)

Maximum Seat Height is 780mm(H)

ABS Plastic with Chrome Base Construction

1-2 Days: \$15

3-4 Days: \$17

5-6 Days: \$19



Lem Bar Stool (White)

(W)385mm x (D)455mm

Height : 660 to 880mm

Material: Synthetic Leather & Chrome Steel

Colour: White

1-2 Days: \$15

3-4 Days: \$17

5-6 Days: \$19



Lem Bar Stool (Black)

(W)385mm x (D)455mm

Height : 660 to 880mm

Material: Synthetic Leather & Chrome Steel

Colour: Black

1-2 Days: \$15

3-4 Days: \$17

5-6 Days: \$19



Tables



Berlin Long Table

(W)1800mm x (D)650mm x (H)750mm

Stainless Steel Frame with Acrylic Top

1-2 Days: \$80
3-4 Days: \$90
5-6 Days: \$110



5ft Round Table

1520mm(W) x 1520mm(D) x 740mm(H)

HDPE with Metal Leg

1-2 Days: \$30
3-4 Days: \$34
5-6 Days: \$40



5ft Round Table with Cloth (White)

1520mm(W) x 1520mm(D) x 740mm(H)

Polyester Cloth

1-2 Days: \$46
3-4 Days: \$50
5-6 Days: \$60



5ft Round Table with Cloth (Black)

1520mm(W) x 1520mm(D) x 740mm(H)

Polyester Cloth

1-2 Days: \$46
3-4 Days: \$50
5-6 Days: \$60



Tulip Table

(W)700mm x (D)700mm x (H)750mm

MDF Top with Iron Leg

1-2 Days: \$45
3-4 Days: \$50
5-6 Days: \$56



6ft Foldable Table

760mm(W) x 1830mm(D) x 740mm(H)

HDPE with Metal Leg Construction

1-2 Days: \$30
3-4 Days: \$34
5-6 Days: \$40

Tables



6ft Foldable Spandex Table (White)

760mm(W) x 1830mm(D) x 740mm(H)

Spandex Cover

1-2 Days: \$42
3-4 Days: \$45
5-6 Days: \$54



6ft Foldable Spandex Table (Black)

760mm(W) x 1830mm(D) x 740mm(H)

Spandex Cover

1-2 Days: \$42
3-4 Days: \$45
5-6 Days: \$54



Cage Table

(W)700mm x (D)700mm x (H)750mm

MDF Gloss Finishing Top with Iron Leg

1-2 Days: \$36
3-4 Days: \$40
5-6 Days: \$48



Discussion Table (White)

700mm(W) x 700mm(D) x 750mm(H)

MDF Top with Chrome Leg

1-2 Days: \$34
3-4 Days: \$38
5-6 Days: \$45



Discussion Table (Black)

700mm(W) x 700mm(D) x 750mm(H)

MDF Top with Chrome Leg

1-2 Days: \$34
3-4 Days: \$38
5-6 Days: \$45



4ft Table

610mm(W) x 1220mm(D) x 740mm(H)

HDPE with White Metal Leg

1-2 Days: \$20
3-4 Days: \$22
5-6 Days: \$24

Tables



4ft Spandex Table (White)

610mm(W) x 1220mm(D) x 740mm(H)

Spandex Cover

1-2 Days: \$28

3-4 Days: \$30

5-6 Days: \$40



4ft Spandex Table (Black)

610mm(W) x 1220mm(D) x 740mm(H)

Spandex Cover

1-2 Days: \$28

3-4 Days: \$30

5-6 Days: \$40



Bar Tables



High Cage Bar Table (White)

(W)700mm x (D)700mm x (H)1020mm
MDF Top with Iron Leg Construction

1-2 Days: \$44
3-4 Days: \$48
5-6 Days: \$58



High Cage Bar Table (Black)

(W)700mm x (D)700mm x (H)1020mm
MDF Top with Iron Leg Construction

1-2 Days: \$44
3-4 Days: \$48
5-6 Days: \$58



Bloom Bar Spandex Table (White)

(W)600mm x (D)600mm x (H)1100mm
Spandex Cover

1-2 Days: \$36
3-4 Days: \$40
5-6 Days: \$48



Bloom Bar Spandex Table (Black)

(W)600mm x (D)600mm x (H)1100mm
Spandex Cover

1-2 Days: \$36
3-4 Days: \$40
5-6 Days: \$48



Bloom Bar Table (White)

(W)600mm x (D)600mm x (H)1100mm
MDF Top with Chrome Leg Construction

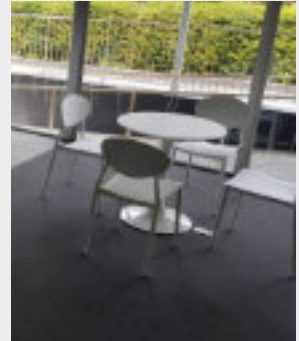
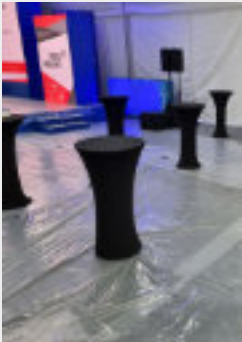
1-2 Days: \$34
3-4 Days: \$38
5-6 Days: \$45



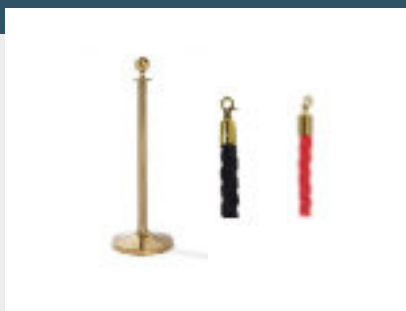
Bloom Bar Table (Black)

(W)600mm x (D)600mm x (H)1100mm
MDF Top with Chrome Leg Construction

1-2 Days: \$34
3-4 Days: \$38
5-6 Days: \$45



Queue Pole



Rope Ball Top Queue Pole

320mm(W) x 360mm(D) x 1000mm(H)
 Rope Length is 1500mm
 Stainless Steel with Twisted Rope
 Red or black rope

1-2 Days: \$16
 3-4 Days: \$18
 5-6 Days: \$22



Queue Pole Cone Base

320mm(W) x 360mm(D) x 920mm(H)
 Maximum Belt Length is 1900mm
 Steel with Black Powder Coating
 Black or red belt

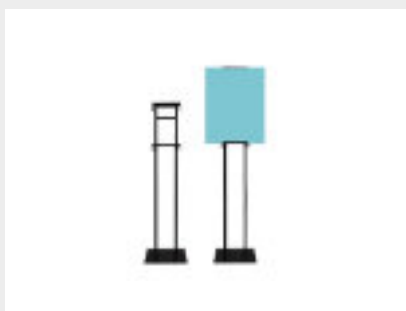
1-2 Days: \$14
 3-4 Days: \$16
 5-6 Days: \$20



Queue Pole Stackable Base

320mm(W) x 360mm(D) x 920mm(H)
 Maximum Belt Length is 1900mm
 Steel with Black Powder Coating
 Black or Red Belt

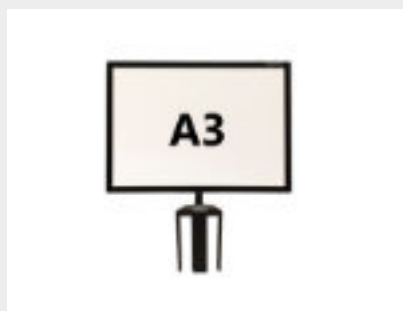
1-2 Days: \$14
 3-4 Days: \$16
 5-6 Days: \$20



Poster Stand

2000mm(H) (Fits A4 to A0 Size)
 Iron
 Available in black or white

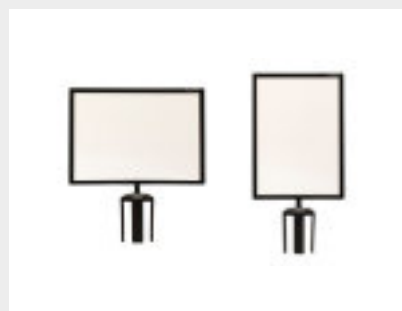
1-2 Days: \$14
 3-4 Days: \$16
 5-6 Days: \$20



Queue Pole Sign (A3)

430mm(W) x 300mm(H) (landscape)
 Steel with Black Powder Coating

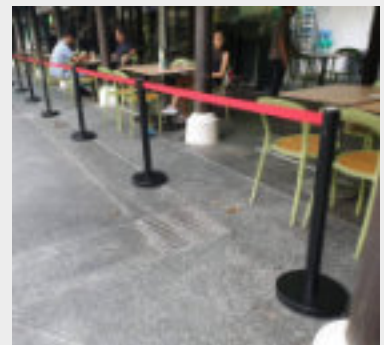
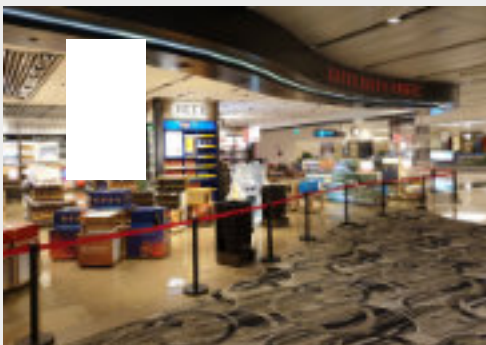
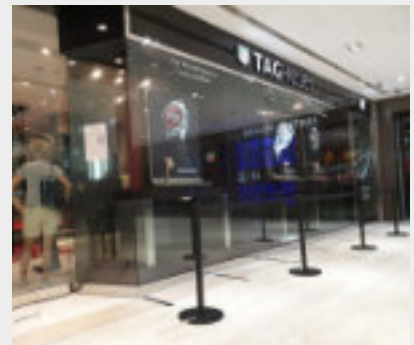
1-2 Days: \$6
 3-4 Days: \$8
 5-6 Days: \$10

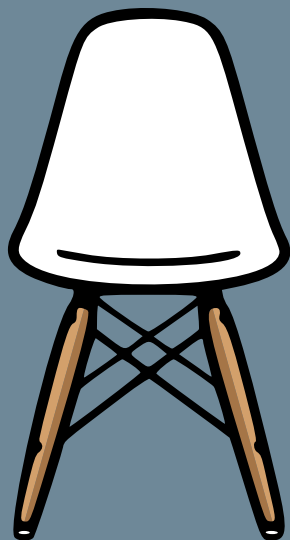


Queue Pole Sign (A4)

220mm(W) x 310mm(H) (Portrait)
 310mm(W) x 220mm(H) (Landscape)
 Steel with Black Powder Coating

1-2 Days: \$6
 3-4 Days: \$8
 5-6 Days: \$10





Four Legs Affair

Four Legs Affair Pte. Ltd.
50 Serangoon North Avenue 4
First Centre
#03-16
Singapore 555856

<https://www.fourlegsaffair.sg>
sales@fourlegsaffair.sg
+65 8830 4916

Delivery Rates

During office hours (Mon to Sat) 9am to 6pm

From \$60 onwards

After office hours / Sunday & Public Holidays

From \$120 onwards

Delivery charge stated above is a guided price and shall be subjected to changes based on the following:

- > Large-scale events/conferences/exhibitions
- > Restrictions imposed by venue
- > Accessibility of the venue
- > Needs special requirements
- > Additional charges for manpower & transportation may be applicable for large-scale events/conferences/exhibitions.

Any last minute changes made 24 hours before event date shall be subjected to availability.

Self collect and return at our warehouse is available.

Terms & Conditions

Mode of Payment

- > Full payment via cash/cheque upon delivery OR
- > Full payment via bank transfer or PayNow latest 7 days before setup date

Handling & Usage

- > The customer is solely responsible for the furnitures used for its intended purpose throughout the usage period.
- > Any possible defects of the furniture shall be checked & acknowledge by Four Legs Affair Pte Ltd and the customer before commencement of the hire.
- > Any delay/cost arising from damages and loss of furniture hired caused by the customer's negligence shall be borne by the customer. All furniture should also be returned in clean and working condition after usage.
- > A 300% penalty of the stated rental rates will be imposed for loss and damaged items due to the customer's negligence.

Cancellation

- > In the event of a cancellation due to unforeseen circumstances, a minimum of 48 hours of lead time must be provided in advance or the customer is to bear a 30% penalty charge for the overall charges.
- > There will not be no cancellation for items already delivered on site, big-scale orders & specially requested furnishing.